



01 About company

1. Vision
2. Technology

02 Products

1. Features
2. Edelweiss Day cream
3. Edelweiss Night cream
4. Main ingredients

03 Clinical trials

1. Clinical data
2. How to use
3. Recommendations





espresso

Beauty

LAB

Skin communication

about us

- Vision



Vision – Skin communication

- **Core values**



Enjoy younger skin age, skin communication

Under this slogan, we developed Espresso's new products.

The combination of mysterious Edelweiss from Switzerland and strong antioxidant moisturizing agent gave birth to a new texture.



■ 1-2 Technology



- **Chronobiology methodology HIPRX - vitalization of autophagy:**

Creating anti-aging skin barrier

- **Patented ingredient (INYLINE) for wrinkles using molecular modeling methodology**

This ingredient is based on the concept of BOTOX which suppresses facial wrinkles by controlling muscle contraction. It uses molecular modeling methodology.

- **LIXIVIATION methodology & natural antioxidant barrier phytogenic complex**

Ease wrinkles by revitalizing the synthesis of fibroblasts and collagen/ 7 kinds of anti oxidant phytogenic complex

- **Patent on phytogenic and natural irritation relief/ phytogenic natural anti-irritant LIPOSOME irritation relief ingredient**
- **Patented whitening ingredient (True Unicorn) using plant that suppresses the synthesis of melanin.**



Dermatology revolution!
Time to make your skin soft and flexible- Anti-aging barrier

Brightening Capsule with Chronobiology technology

Improve complicated skin barriers & ease wrinkles



02. 02 Products

1.DAY CREAM

2. NIGHT CREAM



Product Specification



Name	Espesso by Edelweiss Day cream
Category	Facial cream
Volume	45g
Functionality	Excellent brightening effect Strong moisturizing effect Wrinkle care/ moist primer effect Nourishing effect



Name	Espesso by Edelweiss Night cream
Category	Facial cream
Volume	45g
Functionality	Concentrated wrinkle care – eases facial wrinkles Strong antioxidant / moisturizing effect Soothes the skin Nourishing effect



■ 02 -1 Feature

Solubilization type capsule provides moisture to cells powerfully.
Chronobiology methodology of self skin regeneration

- ✓ HIPRX - vitalization of autophagy:
- ✓ Nourishing capsule
It helps maintain the balance between oil and moisture and nourishes the skin
- ✓ Brightening skin
Skin that is perfectly moisturized, silky smooth, sufficiently nourished will be illuminated with much younger complexion
- ✓ Improve wrinkles around your eyes and nasojugal creases
The cornified layer of skin significantly gains elasticity, and your entire skin restores elasticity
- ✓ Improves the skin barrier
- ✓ Improves the skin dryness
It has better moisturizing effect than hyaluronic acid by more than 30%



Regular cream texture Edelweiss cream texture





▪ 02 -2 Day cream

Extreme moisture care to improve transparency and elasticity. Brightening effect that glows

- One – Bong~ bong~ elastic capsules~~
Each capsule has highly enriched nourishing ultra moisturizing, and powerful brightening effect ~
Contains rhodiola sachalinensis extract which is the mysterious herb desired by emperors
Also contains 'the king of thousands herbs', saussurea involucrata (snow lotus) extract

- Second - contains patented brightening ingredient (True Unicorn)
Moisturizes skin cells
Gem extracts
Brightens your skin to glow like a gem!

LIXIVIATION methodology

Suppresses melanin production - strong brightening effect

Powerful phyto-genic vitalization ingredient provides nourishment

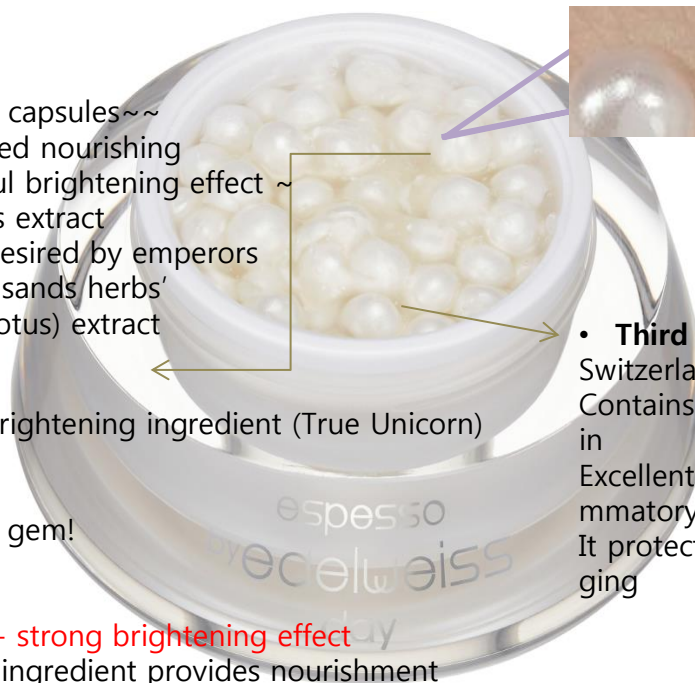
- **Third - Edelweiss water**

Switzerland Edelweiss extract

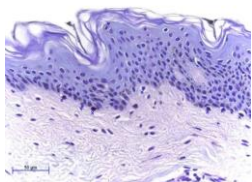
Contains ingredients like chlorogenic acid, luteolin, and apigenin

in
Excellent ingredient in Edelweiss provides antioxidant, anti-inflammatory, and antibacterial effect

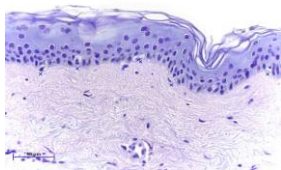
It protects sensitive skin damaged by stress, in particular, by aging



✓ Result Action: Visible restoration of epidermal layer



Dark blue melanocyte filled with melanin



Identified white melanocyte
Where melanin was not accumulated

Active ingredients in Edelweiss day cream reduced melanin synthesis and pigmentation in melanocyte



02 -3 Night cream

Molecular Modelling methodology -

Antioxidant barrier of INYLINE Solution



Patented ingredient in INYLINE suppresses muscle contraction,

Relaxing the muscle to ease facial wrinkles

Bong~ Bong~ gem capsules~~

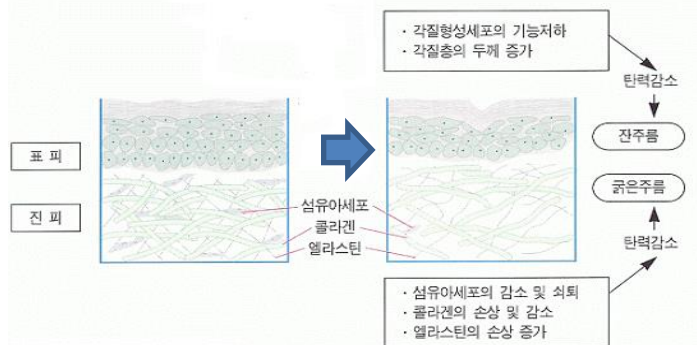
Each capsule has enriched nourishing And ultra moisturizing, and antioxidant care effect Significantly improves wrinkles



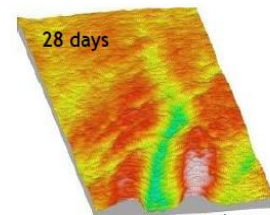
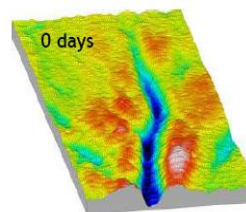
Edelweiss water

Switzerland Edelweiss sap
Excellent ingredients in Edelweiss like chlorogenic acid, luteolin, and apigenin provide antioxidant, anti-inflammatory, and antibacterial effect
It protects sensitive skin damaged by stress, in particular, by aging

✓ Result Action: INYLINE Solution Twice a day, Applied for 28 days



Depth of crow's feet reduced by 14.9%



Volunteer 13



- 02-4 Day/ Night cream – core ingredient

Effect	Name of the core ingredients	Ingredient Characteristics
Brightening effect	TRUE UNICORN	Inhibits effects of endothelin and tyrosinase, suppresses the generation of free radical To suppress melanin synthesis (patented ingredient) - helps users to maintain clear skin tone by preventing melanin deposition
	Lotus callus	
	Marine brown algae	
anti-wrinkle	Inyline	This ingredient is based on the concept of BOTOX which suppresses facial wrinkles by controlling muscle contraction.
	Marine kelp	Ease wrinkles by revitalizing the synthesis of fibroblasts and collagen
	Wrinkless Complex	7 kinds of antioxidant phytogetic complex - natural antioxidant barrier effect
Protects skin	Licorice extract	phytogetic natural anti-irritant, LIPOSOME abirritation patented ingredient
	Vincetoxicum Atratum Extract	
	Flavonoids	
Antioxidant skin barrier	Saussurea involucrata (snow lotus) extract	Creation of all new anti-aging skin barrier Inhibition of MMP-1 by UVA in fibroblasts - photoaging defense Environmental factors (like bacteria, smoking, and pollution) defense Skin stress defense * autophagy vitalization - preventing aging of cells 30% or more moisturize effect compared to hyaluronic acid Unlike vitamin C, it has lasting antioxidant effect for 48 hours
	Wrinkless Complex	
	Edelweiss water	
	HIPRX	



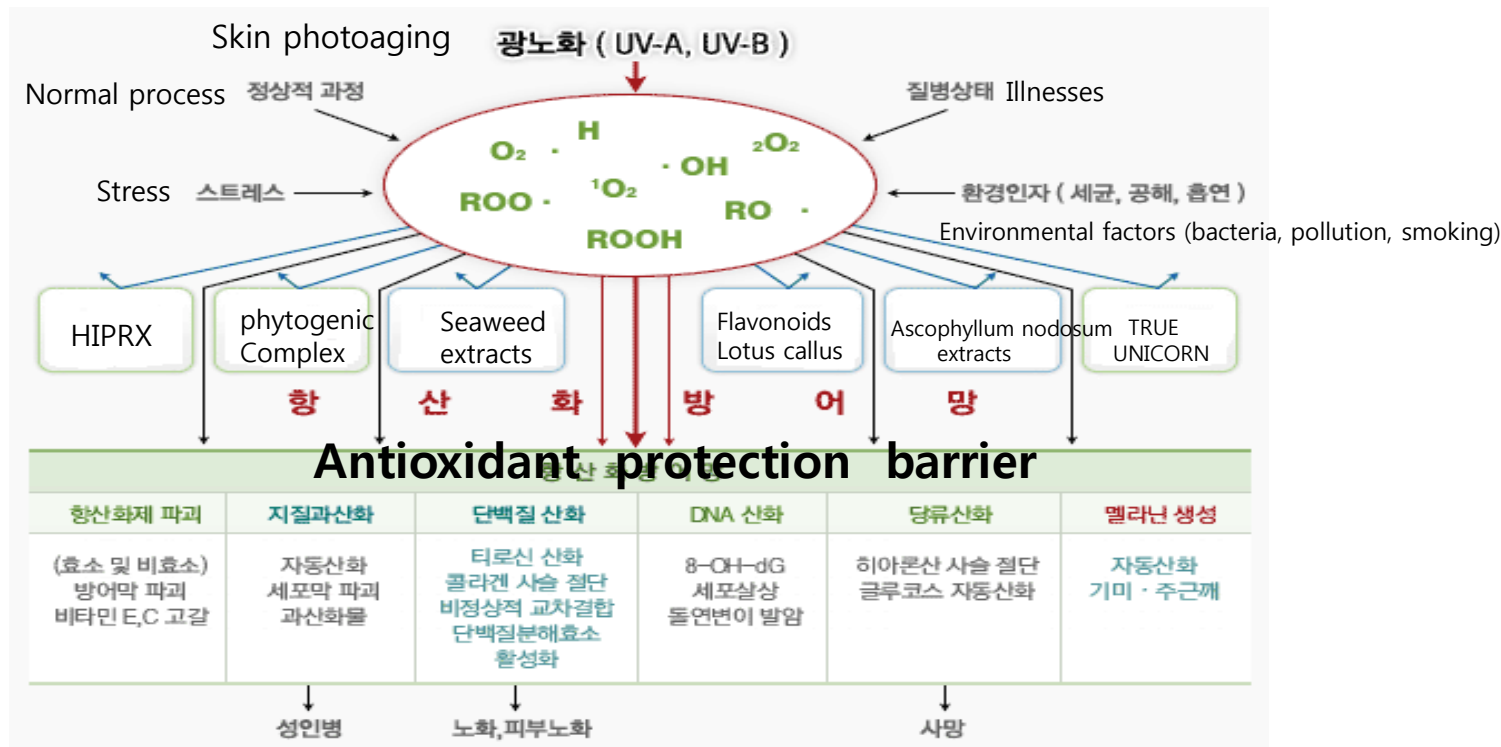
Core of chronobiology methodology - HIPRX: vitalizing autophagy function

What is autophagy?

When stress factors such as UV rays or active oxygen excessively increase or decrease in cells, proteins or cellular components inside the dysfunctional cells are degraded, and needed energy is regenerated. It is an important cellular mechanism to maintain homeostasis of cells.

Autophagy is emerging as a new paradigm for the treatment of cancer, pulmonary diseases, inflammatory diseases, chronic diseases, and degenerative diseases.

Recently, it is reported that autophagy sharply decreases when cell-aging progresses or accelerates. In addition, it has been proven by many experiments that although autophagy genes are less in aged organisms, if autophagy is revitalized, aging process can be slowed.



Contains powerful moisturizing and antioxidant agents, suppresses

Chronobiology methodology Skin communication



03. Effect

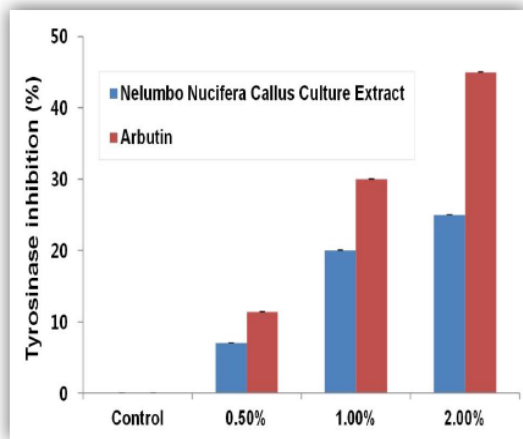
1. Clinical trials

2. How to use

3. Recommendations

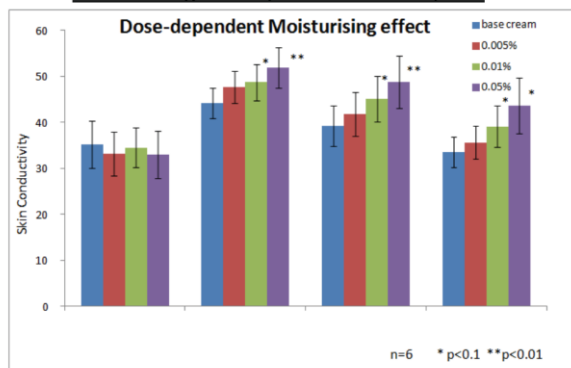
03-1. Clinical trials

연칼러스 배양추출물의 티로시나아제 억제 효능



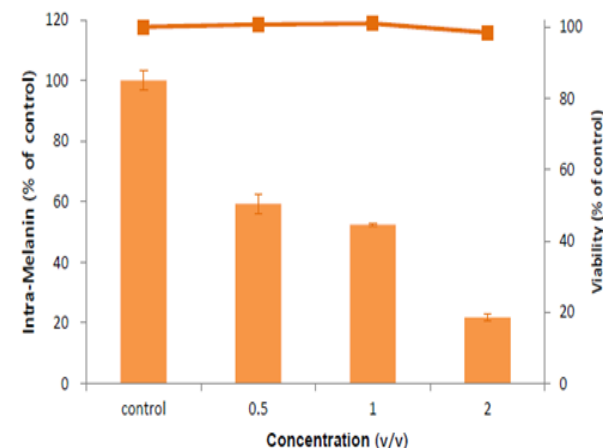
Moisturizing effect - Water Retaining Activity

Moisturizing Efficacy of Moisture Peptide



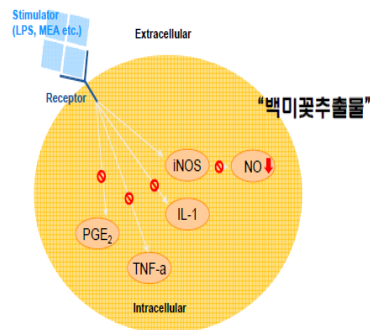
Base cream : Cream (contains 0.02% hyaluronic acid in the formulation)
 Moisture peptide 0.005% Moisture peptide 0.01% Moisture peptide 0.05%

True Unicorn –Skin whitening Effect



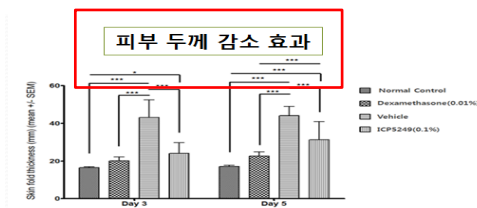
- HiPRX(ICP-5249) restores atopic skin inflammation
 skin inflammation and skin barrier breakdown is restored through
 HiPRX. It has great potential to be used for atopic skin recovery

백미꽃추출물의 자극완화 효능 기전 (특허출원)

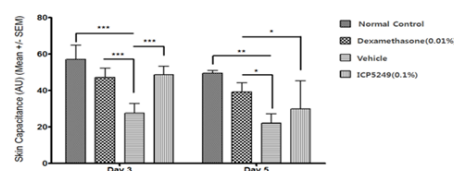


대한민국특허등록 10-1127156

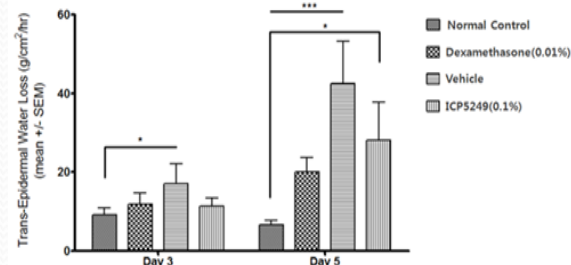
2,4-다이하이드록시벤조산 또는 이를 함유하는 백미 추출물을 포함하는 피부 자극 완화용 화장품 조성물



피부 건조증 개선 효과



피부장벽 개선 효과

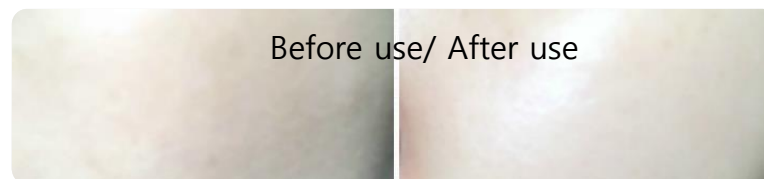




03-2. How to use

STEP

- ① Use spatula to take out 1 or 2 capsules of Edelweiss water serum.
(You can increase quantity to suit your skin condition)
- ② Use your finger or spatula to crush the capsules.
Evenly spread the formula on face.
- ③ You can experience the moisture primer effect full of moisture and glow with our day cream.
We nourish your skin to be bright and beautiful.



❖ Additional tip on how to use Day & Night capsule cream

- If you experience dryness throughout the day, mix the capsule in your base when you do make up.
You will enjoy moisturized and glowing skin whole day.
- To maximise the moisturizing effect, add 2 to 3 capsules in your facial oil.
Apply it on your face before you sleep and you will experience fully moisturized and glowing skin the next day.



I strongly recommend Espresso by Edelweiss cream.



- ✓ Dry and cracked skin
Lackluster skin

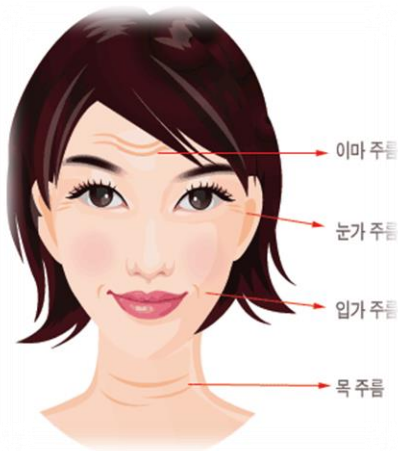


- ✓ Who want brightening effect
With light cream



- ✓ Who want functionality and radiant moisturizing effect at the same time

- ✓ Who want just enough radiant moisturizing effect



- ✓ Who want to take care of their facial wrinkles



THANK YOU