

LUMINIS

Comfort for your Skin.

Product introduction

LUMINIS WHITE CLAY CLEANSING FOAM



Deep cleansing effect
of natural white clay
without tightening phenomena

LUMINIS
White Clay Cleansing Foam





Beginning and end of skin care are impurity care.

From now on, start with Luminis White Clay.

White clay **cleanly removes old keratin, sebum and pore wastes** with excellent adsorption power.

Rich **natural minerals** contained in white clay adjust skin balance while cleansing.

Pure **natural extracts** excluding chemical components smoothly arrange skin and supply nourishment, leaving minimized tightening phenomena after cleansing

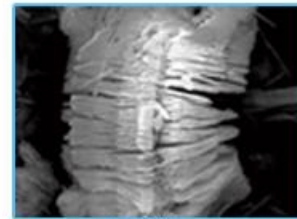
Why everyone says deep cleansing?

[LUMINIS White Clay is different in molecular structure from others.](#)

Deep cleansing at once including waste / color makeup / keratin with strong cleansing power of white clay without irritation

White clay has a **porous molecular structure** (the status of small gaps on the surface or inside of a solid) with strong adhesion and adsorption power. So, white clay is excellent in removing keratin and adsorbing sebum.

Particle of high-purity white clay consists of countless layers like a book and every layer tells its capacity of **adsorbing wastes**. Especially, LUMINIS's patented technology is used to crush the particles to micron sizes so as to make sure of smooth **absorption of the wastes left inside pore without irritation**.



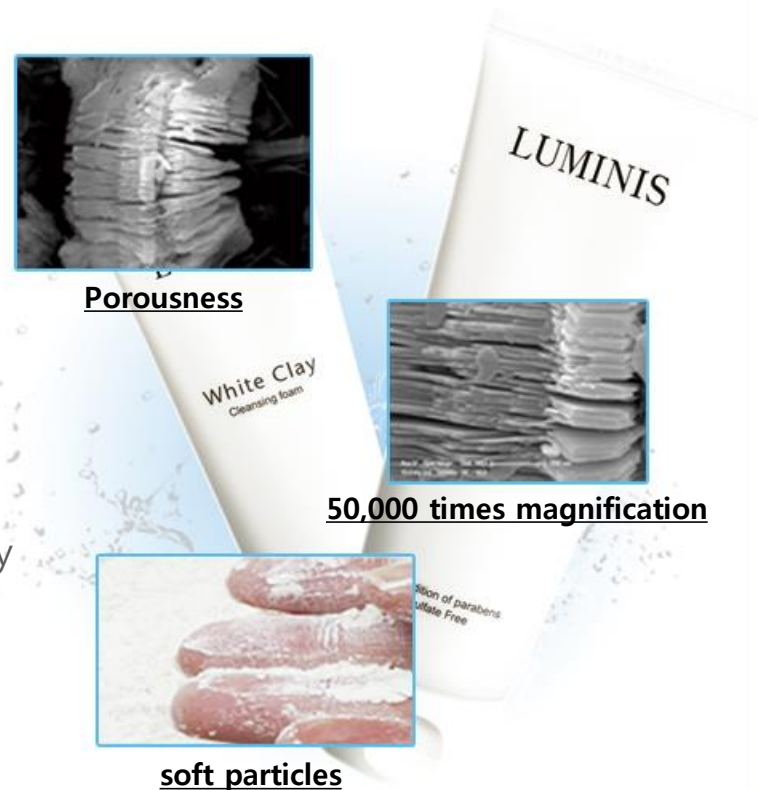
Porousness



50,000 times magnification



soft particles



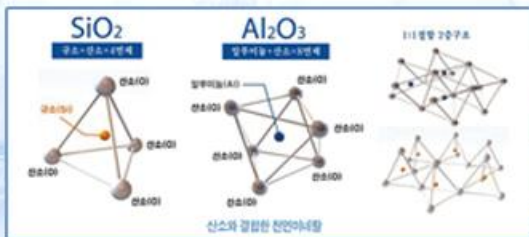
Why look for natural mineral separately?

LUMINIS White Clay is natural mineral itself!

Take a mineral-rich shower together with deep cleansing
for adjusting skin balance and moisturizing!



the 4 heavy metals
detection report



oxygen-combined natural minerals

White Clay is an **oxygen-combined natural mineral substance** itself.

So, it brings resilience to skin by **supplying oxygen** to skin and with astringent action. LUMINIS's unique purification technic is applied to keep rich minerals (calcium, magnesium, zinc, potassium, sulfur, germanium, etc.) and exclude the 4 harmful heavy metals.

So, white clay brings **elasticity and vitality** to skin by **adjusting rhythm and function of skin**.

Also, white clay brings **pore astringent** effect during the drying process of natural minerals.

Why the same natural extract?

LUMINIS is so thoughtful as to care for soothing after cleansing.

Carefully selected natural ferment extract for nourishment, elasticity and skin soothing after cleansing

Thanks to amazing effect of white clay in removing wastes and providing natural minerals and by adding natural ferment extract avoiding the use of chemical substances for artificial cleansing, **skin irritation is minimized and cleansing effect is maximized.**

Especially, soft cleansing capability of white clay added with natural minerals and bifida ferment filtrate are greatly helpful for those who have **problems of skin soothing.**

- ★Free from 5 chemicals:
parabe / sulfate / PEG / alcohol /coloring
- ★Patent "manufacturing method of cell activating agent"
(pat. no. 10-0180615-0000) - technique for leaving beneficial ingredients and removing/treating bacteria and harmful heavy metals.

Bifida ferment filtrate



green tea extract



Mulberry bark extract



Licorice extract



Scutellaria baicalensis extract ferment filtrate



ginseng extract ferment filtrate



It's Clean skin To Luminis Choice

Thanks to the efficacies of natural white clay, LUMINIS White Clay Cleansing Foam is excellent in removing wastes without irritation and without leaving tightening phenomena. Due to the nature of cleansing foam, it may be difficult to see the immediate effects, but steady use of the product will surely lead to gradual improvement of skin. The product is filled with beneficial substances for skin, excluding the possibly harmful substances to maximum level.

LUMINIS brings better health and beauty to your skin.

LUMINIS

White Clay
Cleansing foam

White Clay

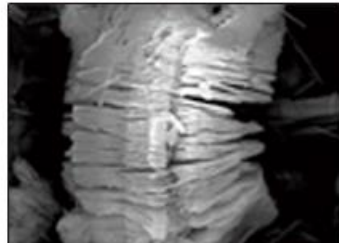
White clay is generated by chemical decomposition of granite through long-time weathering and is a white, **soft powder** consists of **oxygen-combined natural mineral as main ingredient**. Having outstanding water and oil absorbing and covering power, white clay is excellent in **removing skin waste and skin soothing**.

With the **patented manufacturing method of cell activating agent** and high far-infrared emission rate, LUMINIS white clay is greatly helpful for **restoring skin's own balance** by promoting metabolism.

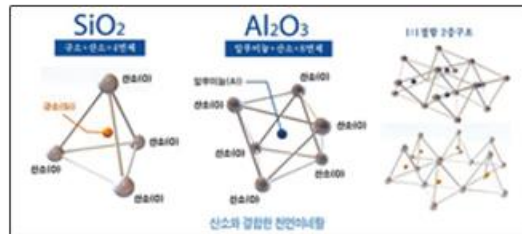
- ✓ Removal of waste
- ✓ Skin soothing
- ✓ Low irritation
- ✓ Supply of natural mineral



50,000 times magnification



Porousness



oxygen-combined natural minerals

KIFA 사단법인 한국원적외선협회
부설 한국원적외선응용평가연구원

무선전화 : 서울특별시 강남구 테헤란로 174-12 http://www.kifa.or.kr TEL:02-2093-0007 FAX:02-2093-0001

시험성적서

발급번호 : KIF-100
의뢰인 : 예대 (예대) [예대]
주소 : 경기도 양주시 용매면 용매로 47-16
접수일자 : 2013년 2월 18일
시험명 : 홍미원 클레이

시험결과	
방사율 (5 ~ 20 μm)	방사에너지 (W/m ² ·μm, 37℃)
0.918	3.54 × 10 ²

참고사항 : KIFA-91-9305
20 본 시험은 적외선 방사율 측정기 37℃에서 시험하였음
FT-IR Spectrometer를 이용한 IRACK 6000에 측정결과
시험장 : 본부
시험장 : 본부

2013년 2월 20일

* 1. 이 성적서는 의뢰인이 제출한 시료에 대한 결과이며, 시료명은 의뢰인이 제시한 것임.
2. 이 성적서는 온도 이외에 사용될 수 없습니다.

발달자 : 서울특별시 강남구 테헤란로 174-12 02-2093-0004

한국원적외선응용평가연구원장

high far-infrared emission rate (91.8%)

Extracts & whole ingredients

Care needs to be taken for selecting
cleansing foam because it's used
everyday. Start with White Clay from
this time forward.

LUMINIS Cleansing foam

Bifida Ferment Filtrate : It is fermented component of Bifidus lactic acid bacteria. It is very effective for skin soothing.

Various metabolites of Bifidus lactic acid bacteria provide necessary nutrients to elastic skin.

Camellia Sinensis Leaf Extract : It makes the skin transparent and clear with high antioxidant effect.

Glycyrrhiza Glabra (Licorice) Root Extract : It recovers tired skin fatigue, caused by daily life. It keeps the skin healthy.

Morus Alba Bark Extract : It is very effective in preventing pigmentation, caused by
sunlight and melanin. Because it inhibits tyrosinase which
is important enzyme of melanin generation.

Bifida / Scutellaria Baicalensis Root Extract Ferment lysate Extract Filtrate :

It induces bioconversion of baicalin which is skin soothing substance.

It prevents skin trouble due to excellent skin relief effect

Bifida / Panax Ginseng Root Ferment Filtrate :

Saponin which is physiological ingredient of ginseng, becomes low molecules
by fermentation. It is easily absorbed into the skin to restore skin vitality.

It also prevents effectively wrinkles and pigmentation, making the skin resilient and bright.

Purified water, Stearic Acid, Glycerin, Lauric Acid, Mica (White Clay), Butylene Glycol, Cocamidopropyl Betaine,
Potassium Hydroxide, Myristic Acid, Glyceryl Stearate SE, Glycyrrhiza Glabra (Licorice) Root Extract, 1,2-Hexanediol,
Sodium Methyl Cocoyl Taurate, Bifida Ferment Filtrate, Camellia Sinensis Leaf Extract, Morus Alba Bark Extract,
Bifida / Scutellaria Baicalensis Root Extract Ferment lysate Extract Filtrate, Bifida / Panax Ginseng Root Ferment Filtrate,
Glycol Stearate, Sodium Chloride, Disodium EDTA, Perfume

LUMINIS

White Clay
Cleansing foam

No addition of p
Sulfate F

No addition of
Sulfate F

Thank you

E-mail	evabio@naver.com
Phone number	+82 . 70 . 4228 . 2184
Adress	47-16, Gwangjeok-ro 326beon-gil, Gwangjeok-myeon, Yangju-si, Gyeonggi-do, Republic of Korea
Home page	www.LUMINIS.co.kr
Manufacturer	EVA Co.

Rest for your Skin
Rest for your Soul

Made in Korea