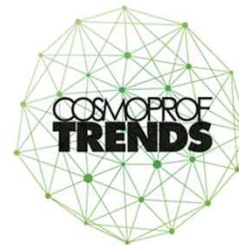


Nail Pen Introduction (1/4)



Features of Nail Pen

- a. This bottle allows to minimize exposure of liquid formula to air so that the nail polish liquid will last as smooth as new until the last drop.***
- b. Because this bottle is All-in-one, the possibility of spilling nail polish formula is nothing so users can use it very comfortably whenever they want to use it.
- c. Users can adjust the amount of formula according to their preference by pushing the button repeatedly.
- d. The button cannot be pushed when safety-lock feature is locked.
- e. The applicability of this bottle is indeed various because various tips are available.



Organised by:
COSMOPROF
WORLDWIDE BOLOGNA

Strategic Partner:
BEAUTYSTREAIIS
INSIGHT INSPIRATION INTELLIGENCE

Shortlisted 2018

Our Nail Pen was selected by Cosmoprof Trends Report 2018 as Trend : Next Gen Applicator.

Nail Pen Introduction (2/4)



How to assemble Nail Pen

1. Please fill the bottle with nail polish liquid.
2. Please insert the inner mechanism into the bottle which you filled with the nail polish liquid and lock it by twisting it to the **left** as tightly as possible.

Please note that

1. We strongly recommend that you fill our nail pen bottle with liquid by 9.5ML.

If you fill the bottle with liquid to the full capacity, because there will be a pressure in the bottle, liquid gets to flow out more than normal especially in the early stage of use of our nail pen. Therefore, we recommend that you fill the bottle with liquid by 9.5ML.

2. You should lock the bottle as tightly as possible

If you manually lock the bottle, please use the rubber tool we sent (refer to the picture). It would be very helpful to lock the bottle very tightly. If you lock the bottle by using locking machine, the recommended torque force is 1NM. ***It is the most important factor to prevent unintended solvent loss.***



『Bottle』

『Inner
Mechanism』



『Rubber tool』

Nail Pen Introduction (3/4)



How to use Nail pen

(YouTube : <https://youtu.be/uVaWWbHmyxE>)

1. Remove the 1st safety cap by unrolling.
2. Unlock the 2nd safety-lock feature by twisting it to the right.
3. Push the button to allow the brush to automatically pop up.
4. Gently apply the formula to the extent of users' preference by pushing the button about 2 to 3 times.
5. Once finished, lock the safety-lock feature by twisting it to the left.
6. Putting the safety cap back up by rolling.



How to Effectively use Nail pen

(YouTube : <https://youtu.be/xVVv2hS3as0>)

1. We strongly recommend using only one side of the brush while you are applying nail polish liquid by using Nail pen

Firstly, you check what side of the brush the liquid is more accumulated on, and you continuously use only that side of the brush while you are using Nail pen. If you consume all the liquid on that side of the brush, push the button just 2 – 3 times to accumulate the liquid to use. It is very convenient to control the amount of the liquid users want to use. The reason why we recommend this is, if you use both sides of the brush so you consume all liquid on both sides of the brush at once, you need to push the button more times than 2 – 3 times to accumulate enough liquid on the brush again.

2. If you push the button slowly, you can accumulate more amount of liquid per click

Our nail pen is designed to open a space when the button is being pushed so that liquid in the bottle can flow down through the space. Therefore, if the button is being pushed slowly, because it gives more time liquid can flow down, the amount of liquid per click becomes more than in the case of pushing the button quickly.

Nail Pen Introduction (4/4)



Three versions of Nail pen

1. TYN-001

The amount of liquid per click : ★★☆☆

2. TYN-002(Only for low viscosity)

The amount of liquid per click : ★☆☆☆

3. TYN-003

The amount of liquid per click : ★★★

TYN-001 and TYN-003 are suitable for moderate or a little high viscosity liquid.

TYN-002 can be applied to all the viscosities liquid even including very low viscosity because it prevents the possibility of dripping or overflow, and it features a relatively consistent amount of liquid per click than other versions.

However, because It has less amount of liquid per click than other versions, we would like to recommend applying this version to low or very low viscosity to cover it.

Therefore, please perform tests on all the versions to find out which version is suitable for your liquid formula.

