

dear. architect

ROOMY PUZZLE CARD

PRODUCT PROPOSAL.

TEL.

+82 50 7559 5850
+82 10 8454 5850

ONLINE.

front@deararchitect.kr
deararchitect.kr

CONTACT.

Gyeonggi XR center, 5th
Gwanggyo Business Center, 6f

PRODUCT PROPOSAL.

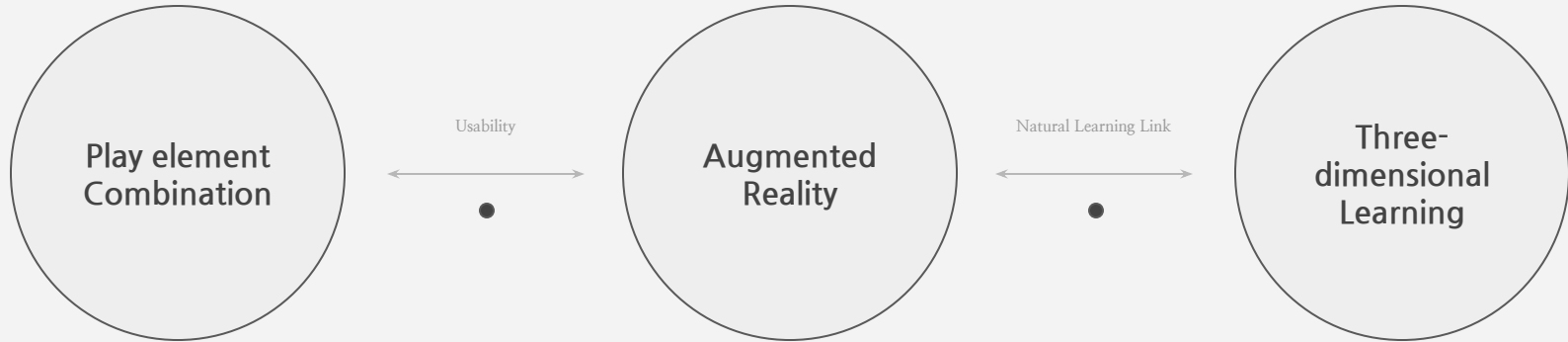
PRODUCT BACKGROUND.

Word card game, can't the child have fun himself?

If you have a child, you have to show the card that your mother or father buys together, and if you approach it in a learned way, the child gets bored. Then, if you give the child a card to do it alone, the card will roll around the house. Then the cards disappear one by one, hidden somewhere in the corner, and eventually, they disappear from memory.

So, we thought. Let me introduce you to an attractive word card, a Rumi puzzle card that you can play with yourself, stimulate curiosity in various ways, and use steadily with your child's growth.

KEYWORD.



PRODUCT PROPOSAL.

PRODUCT TYPE.

- SEA ANIMAL SERIES
- JUNGLE ANIMAL SERIES

The ROOMY puzzle card consists of a series of sea creatures where you can meet various creatures in the sea and a series of jungle animals where you can meet various animals.

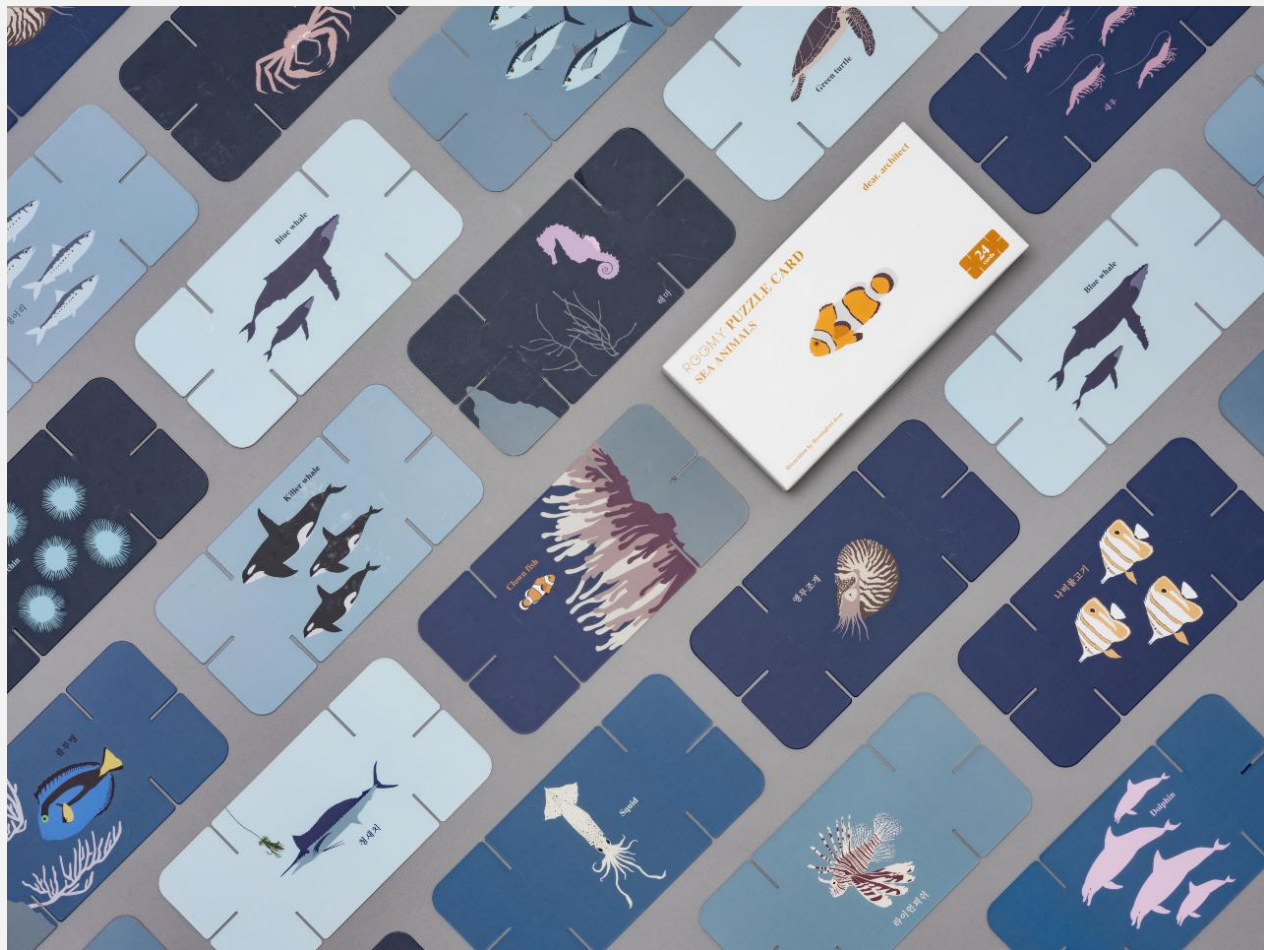


PRODUCT PROPOSAL.

PRODUCT TYPE.

- SEA ANIMAL SERIES
- JUNGLE ANIMAL SERIES

바다 생물 24종



PRODUCT PROPOSAL.

PRODUCT TYPE.

- SEA ANIMAL SERIES
- JUNGLE ANIMAL SERIES



정글 동물 24종

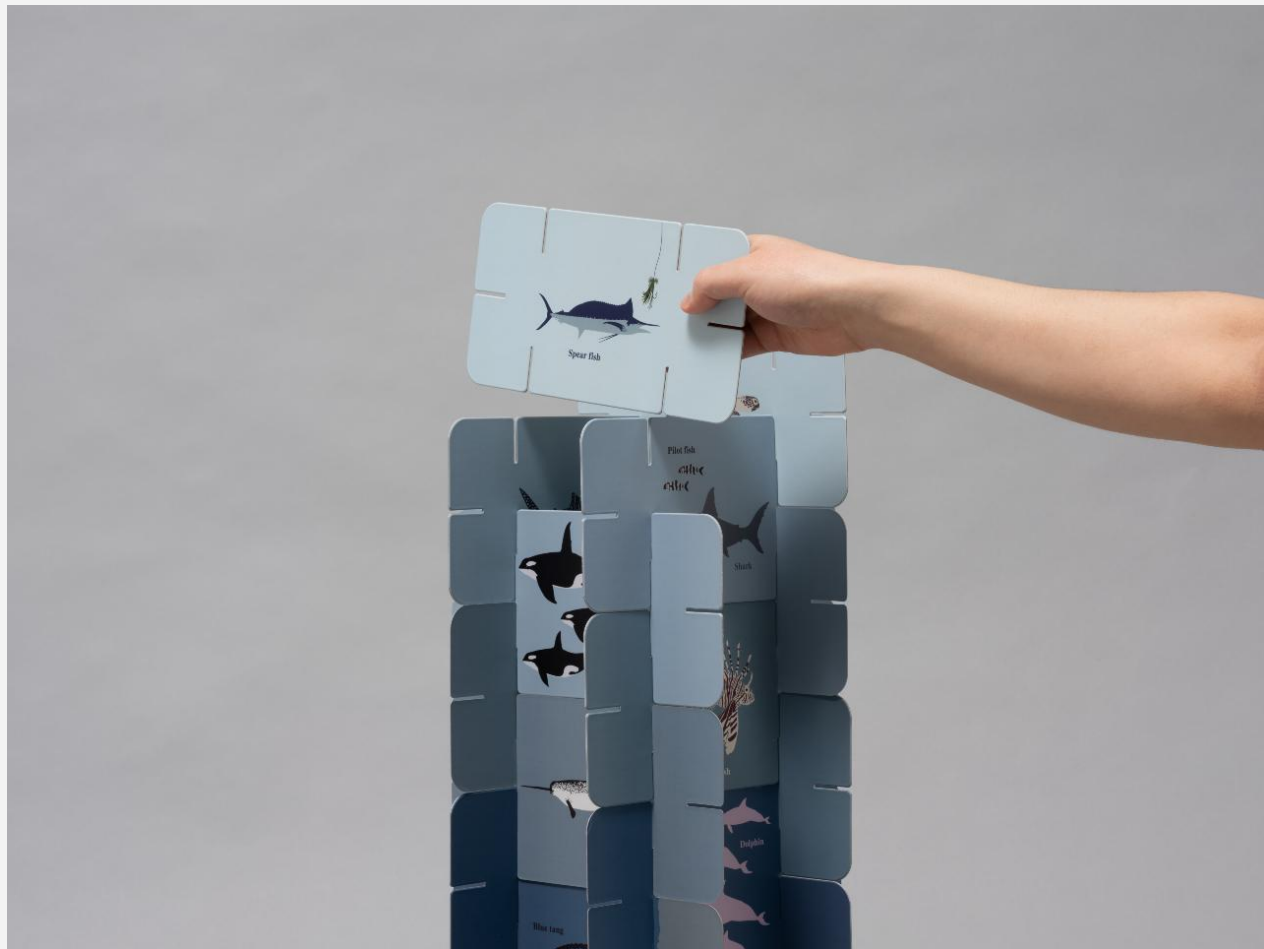
PRODUCT PROPOSAL.

FEATURE POINT 1.

— STACKING

The biggest feature of the ROOMY puzzle card is that it can be stacked. Each card has 6 grooves, so it can be assembled in various ways. It is possible to build from the height that children like to build creatively on their own.

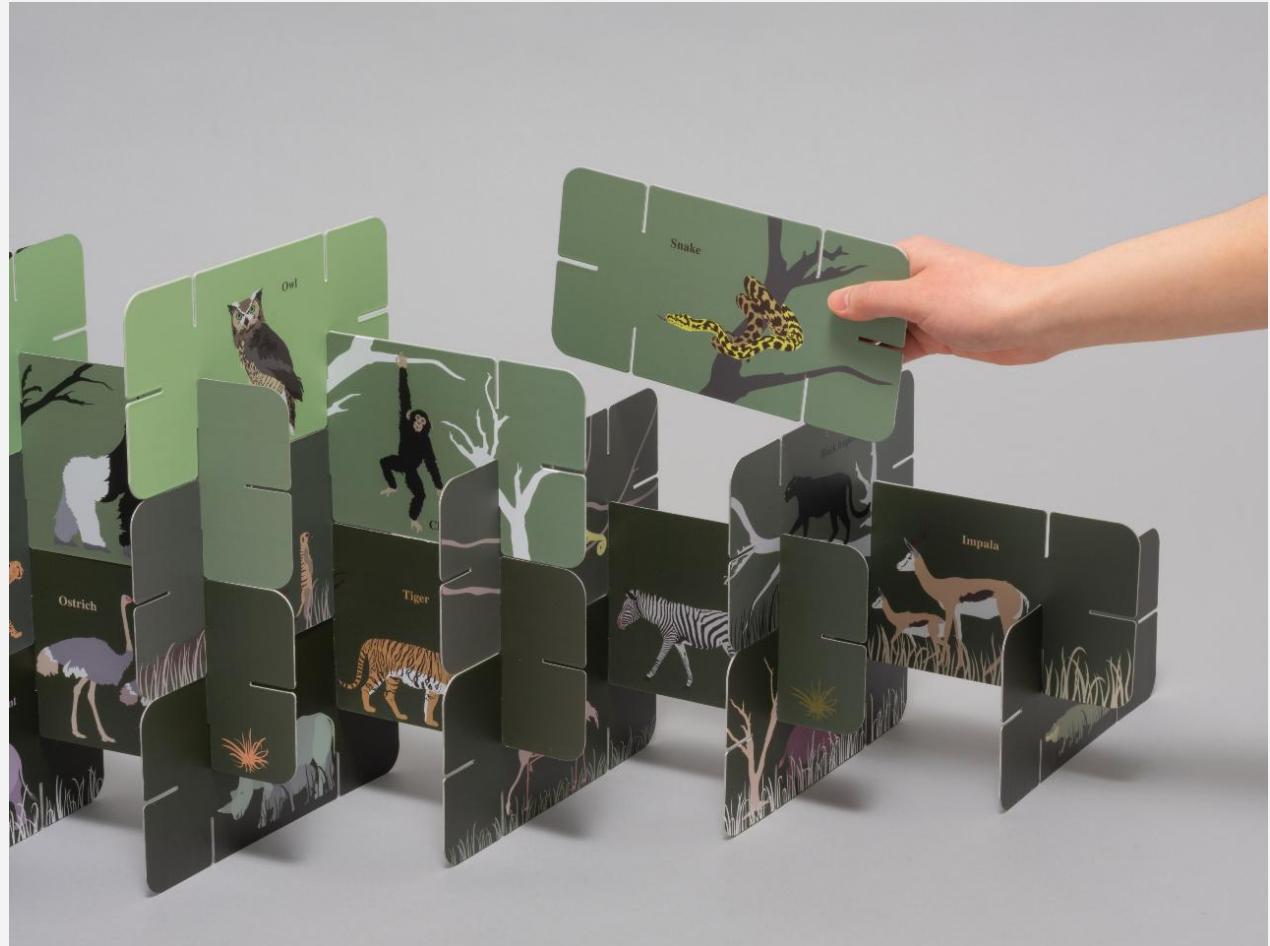
바다 생물 시리즈



PRODUCT PROPOSAL.

FEATURE POINT 1.

- STACKING



정글 동물 시리즈

PRODUCT PROPOSAL.

FEATURE POINT 2.

- Intuitive design

The background color of the ROOMY puzzle card is divided according to the characteristics of the ecosystem. The deeper the sea life series goes, the darker the blue tone background, and the deeper the jungle animal series goes, the darker the green tone background.

바다 생물 시리즈



PRODUCT PROPOSAL.

FEATURE POINT 2.

- Intuitive design

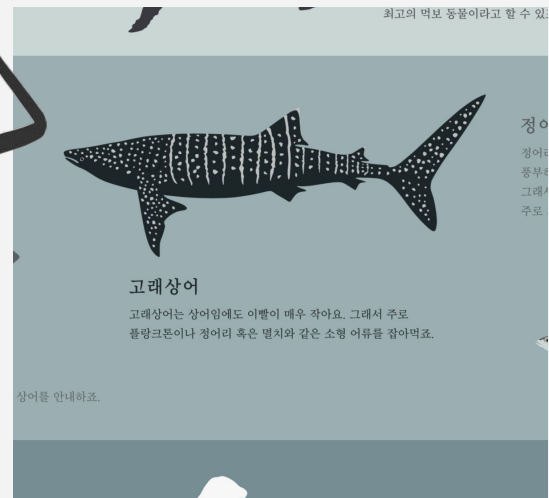


정글 동물 시리즈

FEATURE POINT 3.

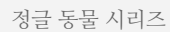
It provides a bromide with features that can explain the characteristics of marine life and jungle animals at the child's eye level.

바다 생물 시리즈



FEATURE POINT 3.

- LEARNING



PRODUCT PROPOSAL.

FEATURE POINT 4.

– AR

After assembling, a new game begins. All cards have augmented reality (AR). If you look at the picture of the card on the ROOMY app, you can see the marine life and jungle animals moving in a lively way. Each side of the card has different augmented reality. If you touch the Korean side, you can read it in Korean, and if you touch the English side, you can read it in English.



PRODUCT PROPOSAL.

FEATURE POINT 5.

— STACKING FREELY

There is no way to make it, so you can expand it as much as you want. You can build your own jungle, your own sea in three dimensions, from building high to building freely.



PRODUCT PROPOSAL.

dear. architect

COMPANY INFO.

'dear architect' is opening a new playground by combining existing children's products with current technology (AR). 'ROOMY' is short for Roommate, meaning a friend who shares a room with a child.

'ROOMY' consists of a block toy and puzzle card that personifies furniture.
Both products offer new experiences to children by incorporating AR into existing toys.

In the future, Lumi puzzle cards will be expanded into more diverse series. A series of rides such as cars and airplanes, not creatures, can be released, or the series can be extended to Hangul and alphabet.

MORE INFO.

Instagram
<https://www.instagram.com/roomy.toy/>

Homepage
<https://deararchitect.kr/>

TEL.

+82 50 7559 5850
+82 10 8454 5850

ONLINE.

front@deararchitect.kr
deararchitect.kr

CONTACT.

Gyeonggi XR center, 5th
Gwanggyo Business Center, 6f

dear. architect