



**GRACE CORPORATION**  
Automotive Solution **S** Provider



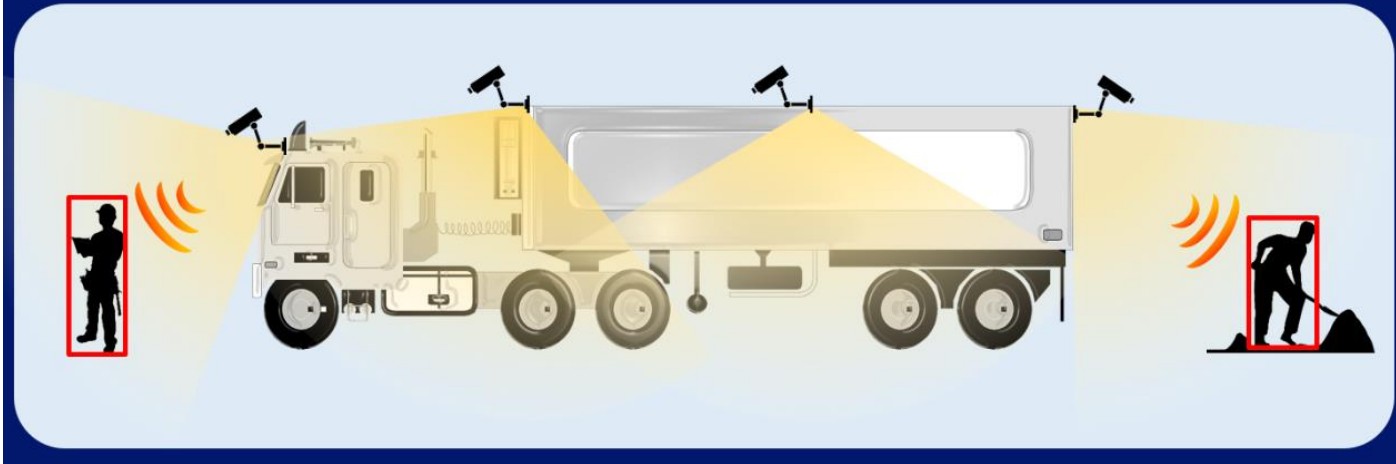
# 4Ch human-recognition AI system for the safety around forklifts and construction equipment

---

Innovative Infotainment Global Partner

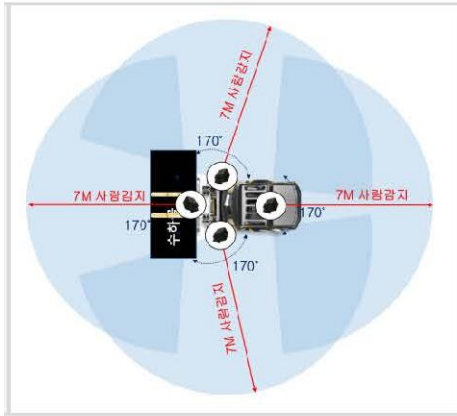


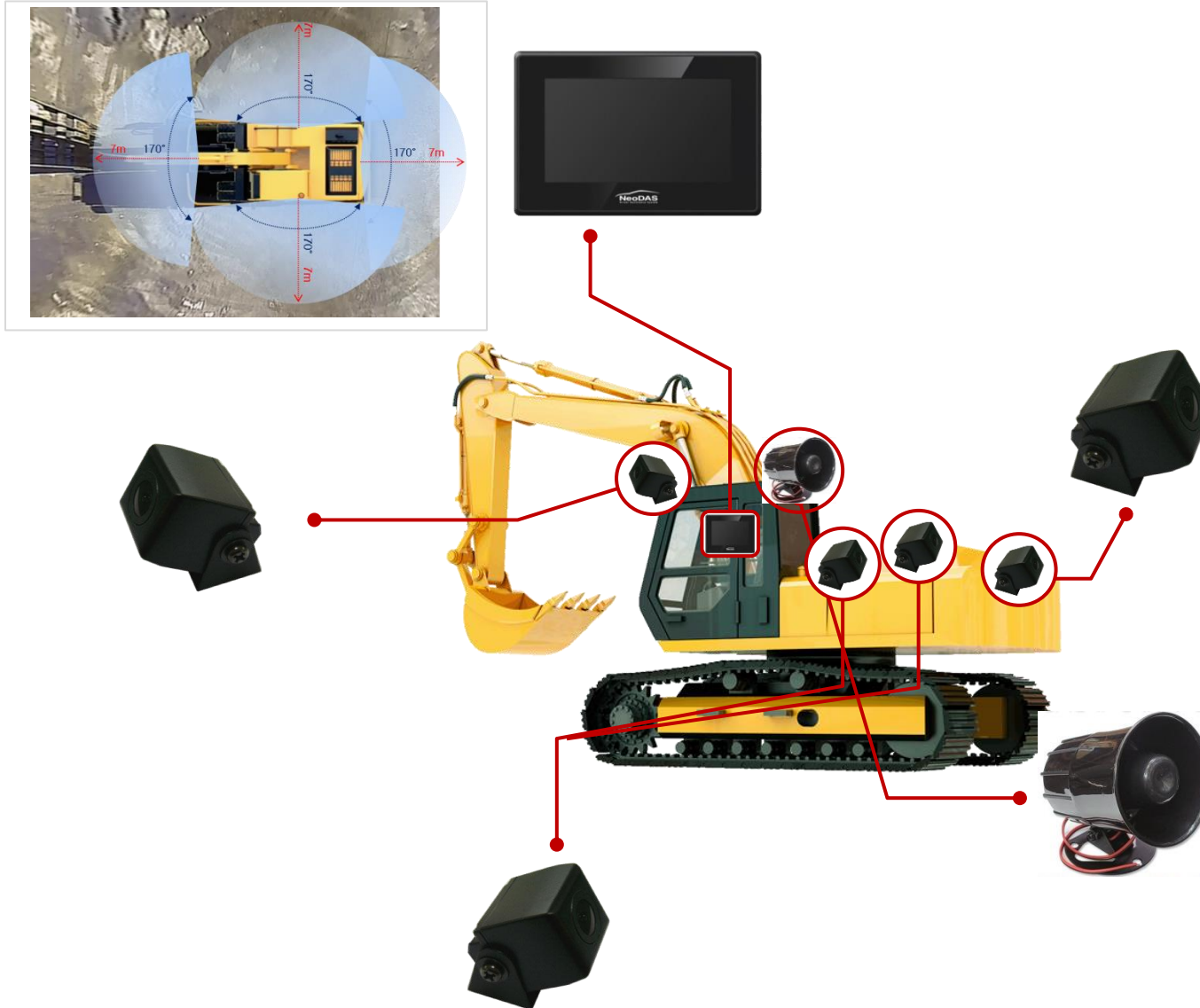
## Overview



## Applicable to



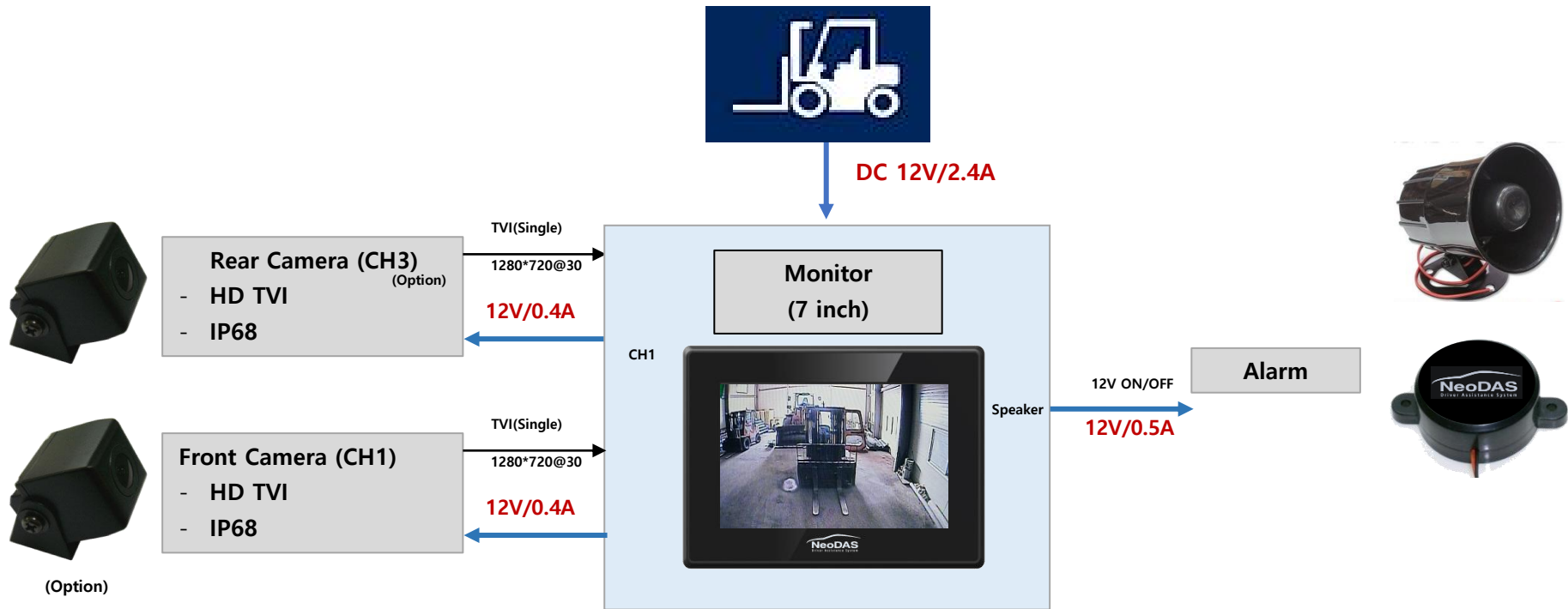




Division	NeuDAS Q7			
	A Type (2Ch Front/Rear)	B Type (2Ch Side/Rear)	C Type (3Ch Side/Rear)	D Type (4Ch Side/Rear)
Camera channel	Front 1 Channel Rear 1 Channel	Rear 2 Channel	Rear 3 Channel	Front 1 Channel Rear 3 Channel
Camera resolution	1M pixel			
Camera FOV	170°			
Display size/Resolution	7 Inch (800*480)			
Recognition target	Pedestrians only			
Optical storage	4-channel image storage: * 64GB (About 5hr : 4ch REC), Micro SDXC/U3class/MLC Type) *128GB (약 10hr : 4ch REC), Micro SDXC/U3class/MLC Type			
Recognition distance	1.5m ~ 7m			
Warning distance	3m or 5m or within 7m			
Alarm sound level	90 ~ 100dB			
Operating temperature	-20 ~ 70°C			
Operating voltage	DC 12V~24V			
Waterproof grade	CAMERAS: IP68 Certified / MAIN: IP65 grade			

## 04 System Configuration Diagram and Differentiation

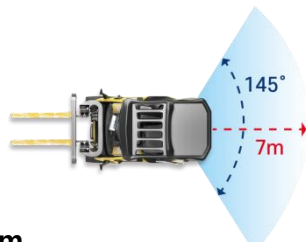
GRACE CORPORATION



### Differentiation points of Q7



Artificial intelligence AI system  
that recognizes people



Recognition range:  
1.5~7M

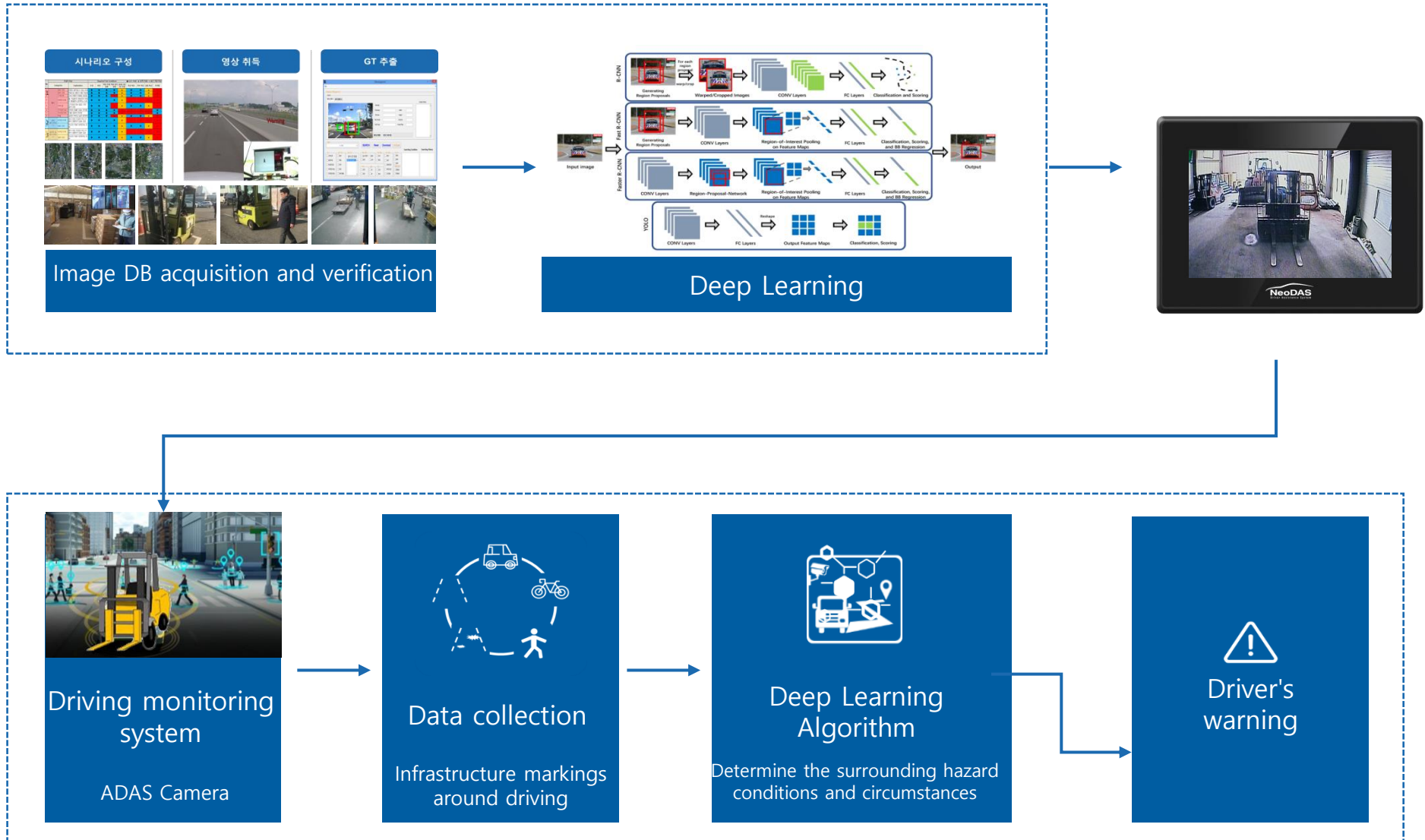


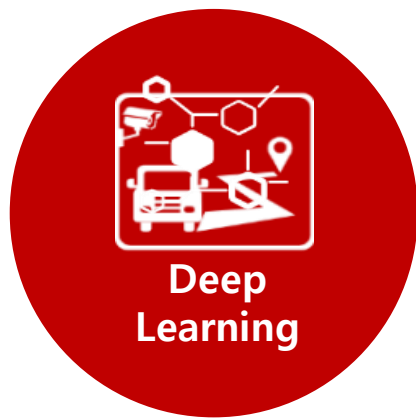
Image and sound alarms when detected



Waterproof and dustproof  
monitors & cameras







## The first system

- The first ADAS legalized product using deep learning algorithms



## High recognition rate

- Multiple Object Recognition Using Deep Learning Algorithm
- Building large learning data
- Recognize more than 10 objects at the same time



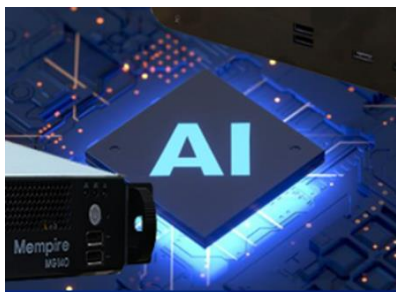
## Quick response

- Dual-core Cortex-A72, Quad-core Cortex-A53 CPU
- NPU(Neural Processing Unit, 2.4TOPS) for AI
- 20FPS+ Response Speed



## Apply different environments

- Applicable to a wide range of weather and environments
- Ten years of database accumulation for a variety of situations
- Continuous database deployment to be planned

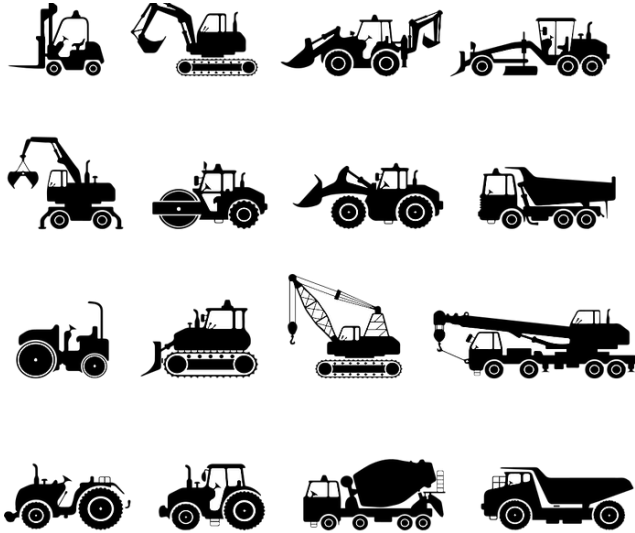




# Applicable vehicle types and installation examples

GRACE CORPORATION

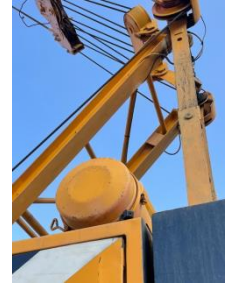
Applicable to all types of automobiles and heavy equipment



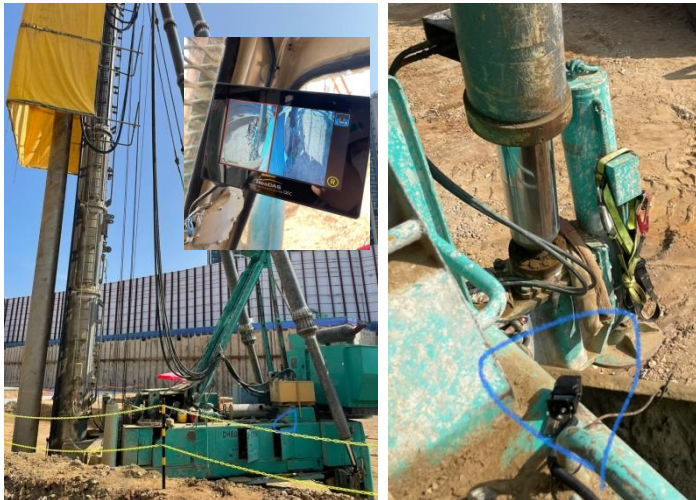
Forklift



Crane



Pile Driver



Loader & Reach Stacker



Excavator





**GRACE CORPORATION**  
Automotive Solution **S** Provider



## **GRACE CORPORATION**

9F. Creative Economy & Innovation Center Bldg., 12, 645-beongil, Daewangpangyo-ro,  
Bundang-gu, Seongnam-si, Gyeonggi-do 13487 South Korea

TEL: +82-10-3319-3712

E-MAIL: [info@gracecorp.co.kr](mailto:info@gracecorp.co.kr)